

# COEPRO A112

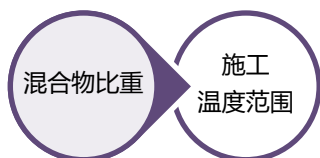
## 界面砂浆 BONDING SLURRY

COEPRO A112是单组分聚合物改性水泥基粉末状的界面砂浆，可用作水泥基砂浆或者找平砂浆的粘结剂。

COEPRO A112具有优异的层间粘结性，并且能够防止冻结、防止水分渗入，施工后具有较长的开放时间。

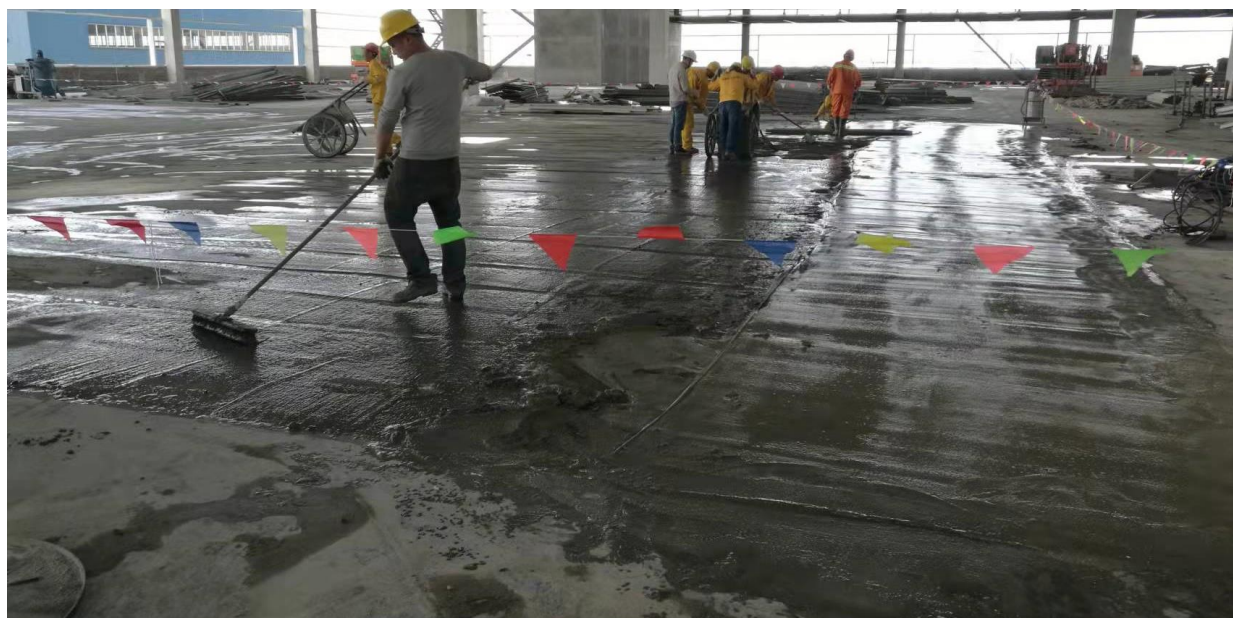
COEPRO A112 is one-component, polymer-modified, cement-based bonding slurry, used as adhesive of the cement-based/levelling mortar. COEPRO A112 has excellent interlayer adhesion, can prevent freezing and moisture infiltration, and has a long open time for the next coat.

- 优异的层间粘结性  
Excellent adhesion
- 防冻、防水渗入  
Antifreezing, water-proof
- 施工后开放时间长  
Long open time for the next coat
- 多用途  
Multi-purpose
- 易施工  
Easy to apply

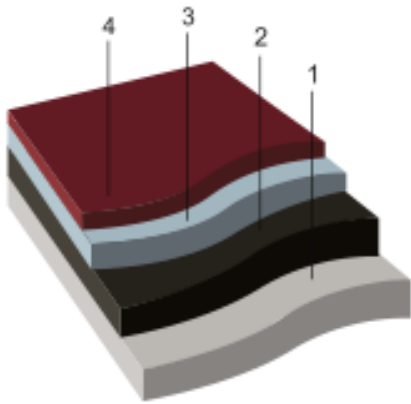


1.85g/cm<sup>3</sup>

+5°C~35°C



步骤 Step	产品 Product	说明 Information	理论用量 Consumption	施工方法 Application method	覆涂间隔时间 Overcoating
1	基面 Base	处理 Preparation	机械处理, 清洁 Mechanical treatment and cleaning of base		
2	界面砂浆 Bonding slurry	COEPRO A112 聚合物改性水泥基界面砂浆 Polymer-modified cement- based bonding slurry	2~2.5kg/m <sup>2</sup>	刷涂 Brush	即时 (湿对湿结合) Immediately (wet-to-wet application)
3	砂浆层 Mortar	COEPLAN T520 快凝自流平砂浆 Fast drying SL topping	1cm厚度约17kg/m <sup>2</sup> Approx. 17kg/m <sup>2</sup> for the thickness of 1cm	摊涂 Spreading	约72小时 Allow 72 hours
		COEPLAN T530 快凝抗裂找平砂浆 Fast drying anti-crack levelling mortar	5cm厚度约45kg/m <sup>2</sup> (加入200kg石子) Approx. 45kg/m <sup>2</sup> for the thickness of 5cm (add 200kg of stones)		
4	面涂 Topcoat	COEPUR W700 水性聚氨酯罩面 Water-based polyurethane topcoat	0.1kg/m <sup>2</sup>	滚涂 Roller	



## 适用场景

- 作为水泥基砂浆的粘结剂
- 作为找平砂浆的粘结剂

## Uses

- As adhesive of the cement-based mortar
- As adhesive of the levelling mortar